

MIURIO RUG CATALOGUE 2020

TABLE OF CONTENTS

Flowery Water Reflection rugs

2

Ocean Splash rugs

28

Knitted Mosaic rugs

48

Art Deco Diagonal rugs

12

Tiled Arrow rugs

34

Geisha rug

56

Mondrian rugs

22

Pomegranate rugs

40

Heart rugs

60



Flowery Water Reflection

This flowery water reflection hand-knotted wool rug is a conversation starter in any space. Striking accent colours give the rug a dominant character. It is as chic underfoot as it is stylish. Available in red-blue, grey-yellow, mustard and monochromatic colourways.



Flowery Water Reflection in Grey Rug

Material: New Zealand merino wool and viscose mix

Size: W: 140 cm x H: 200 cm; W: 200 cm x H: 300 cm

Technique: Hand-knotted rug

Production and shipping time: Approx. 6 weeks, depending on your rug size

Delivery after shipping: 3-5 days

Handmade in India, custom made to order

NB! The rug design (and its size) can have adjusted colourways, according to a custom order. Other sizes available upon request.





Flowery Water Reflection in Mustard Rug

Material: New Zealand merino wool and viscose mix

Size: W: 140 cm x H: 200 cm; W: 200 cm x H: 300 cm

Technique: Hand-knotted rug

Production and shipping time: Approx. 6 weeks, depending on your rug size

Delivery after shipping: 3-5 days

Handmade in India, custom made to order

NB! The rug design (and its size) can have adjusted colourways, according to a custom order. Other sizes available upon request.



Flowery Water Reflection in Grey Rug

Material: New Zealand merino wool and viscose mix

Size: W: 140 cm x H: 200 cm; W: 200 cm x H: 300 cm

Technique: Hand-knotted rug

Production and shipping time: Approx. 6 weeks, depending on your rug size

Delivery after shipping: 3-5 days

Handmade in India, custom made to order

NB! The rug design (and its size) can have adjusted colourways, according to a custom order. Other sizes available upon request.





Monochromatic Flower Reflection Rug

Material: New Zealand merino wool and viscose mix

Size: W: 140 cm x H: 200 cm; W: 200 cm x H: 300 cm

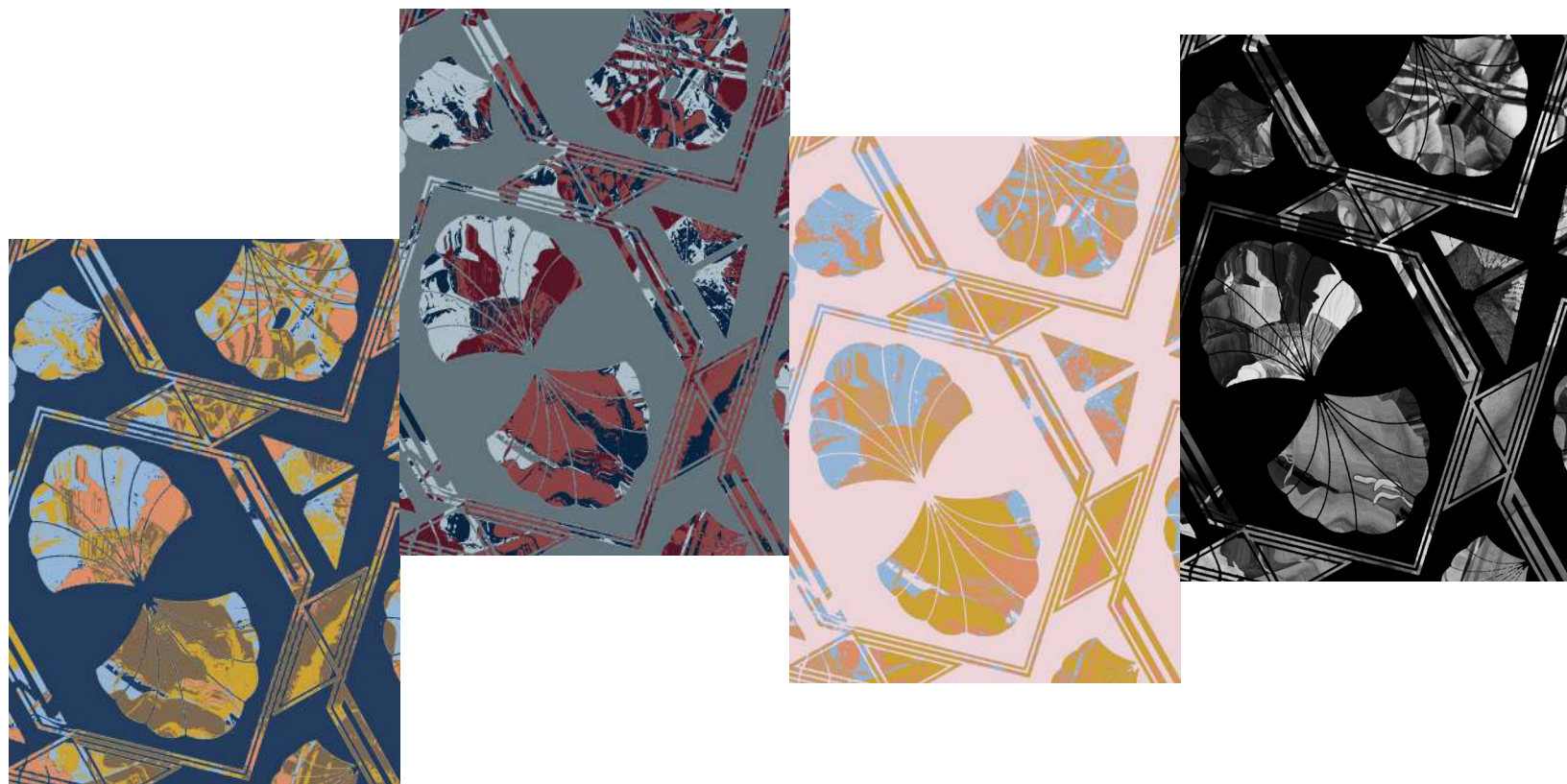
Technique: Hand-knotted rug

Production and shipping time: Approx. 6 weeks, depending on your rug size

Delivery after shipping: 3-5 days

Handmade in India, custom made to order

NB! The rug design (and its size) can have adjusted colourways, according to a custom order. Other sizes available upon request.



Art Deco Diagonal

This art deco style inspired rug can be treated as a symbol of luxury, glamour and exuberance at your home. It's our tribute to the flashy and highly decorative style of visual arts, architecture, furniture and craftsmanship of the beginning of 20th century. Distinctive floral motives and triangular shapes create an instant connection to the still highly popular fashion epoque in the viewer's eyes. Available in blue, pink, grey-burgundy and black & white colourways.



Art Deco Diagonal Blue Rug

Material: New Zealand merino wool and viscose mix

Size: W: 140 cm x H: 200 cm; W: 200 cm x H: 300 cm

Technique: Hand-knotted rug

Production and shipping time: Approx. 6 weeks, depending on your rug size

Delivery after shipping: 3-5 days

Handmade in India, custom made to order

NB! The rug design (and its size) can have adjusted colourways, according to a custom order. Other sizes available upon request.





Art Deco Diagonal Pink Rug

Material: New Zealand merino wool and viscose mix

Size: W: 140 cm x H: 200 cm; W: 200 cm x H: 300 cm

Technique: Hand-knotted rug

Production and shipping time: Approx. 6 weeks, depending on your rug size

Delivery after shipping: 3-5 days

Handmade in India, custom made to order

NB! The rug design (and its size) can have adjusted colourways, according to a custom order. Other sizes available upon request.





Art Deco Diagonal Grey Rug

Material: New Zealand merino wool and viscose mix

Size: W: 140 cm x H: 200 cm; W: 200 cm x H: 300 cm

Technique: Hand-knotted rug

Production and shipping time: Approx. 6 weeks, depending on your rug size

Delivery after shipping: 3-5 days

Handmade in India, custom made to order

NB! The rug design (and its size) can have adjusted colourways, according to a custom order. Other sizes available upon request.





Art Deco Diagonal Bw Rug

Material: New Zealand merino wool and viscose mix

Size: W: 140 cm x H: 200 cm; W: 200 cm x H: 300 cm

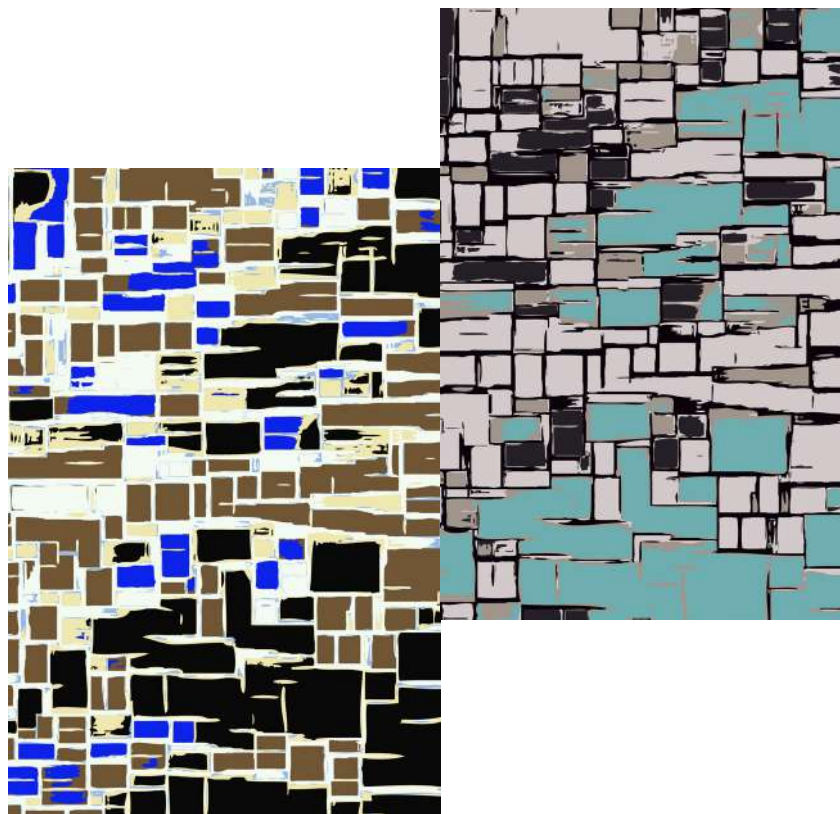
Technique: Hand-knotted rug

Production and shipping time: Approx. 6 weeks, depending on your rug size

Delivery after shipping: 3-5 days

Handmade in India, custom made to order

NB! The rug design (and its size) can have adjusted colourways, according to a custom order. Other sizes available upon request.



Mondrian

This rug design is a homage to famous Dutch painter and influencer of abstract art, Piet Mondrian, of the 20th century. Mosaic-style pattern in flamboyant gold and black colours or serene grey-teal palette resemble progressive style and change in form that the painter created during his life.

This exclusive handmade rug will act as an ultimate accessory and art piece in your room.



Mondrian in Black-Gold Rug

Material: New Zealand merino wool and viscose mix

Size: W: 140 cm x H: 200 cm; W: 200 cm x H: 300 cm

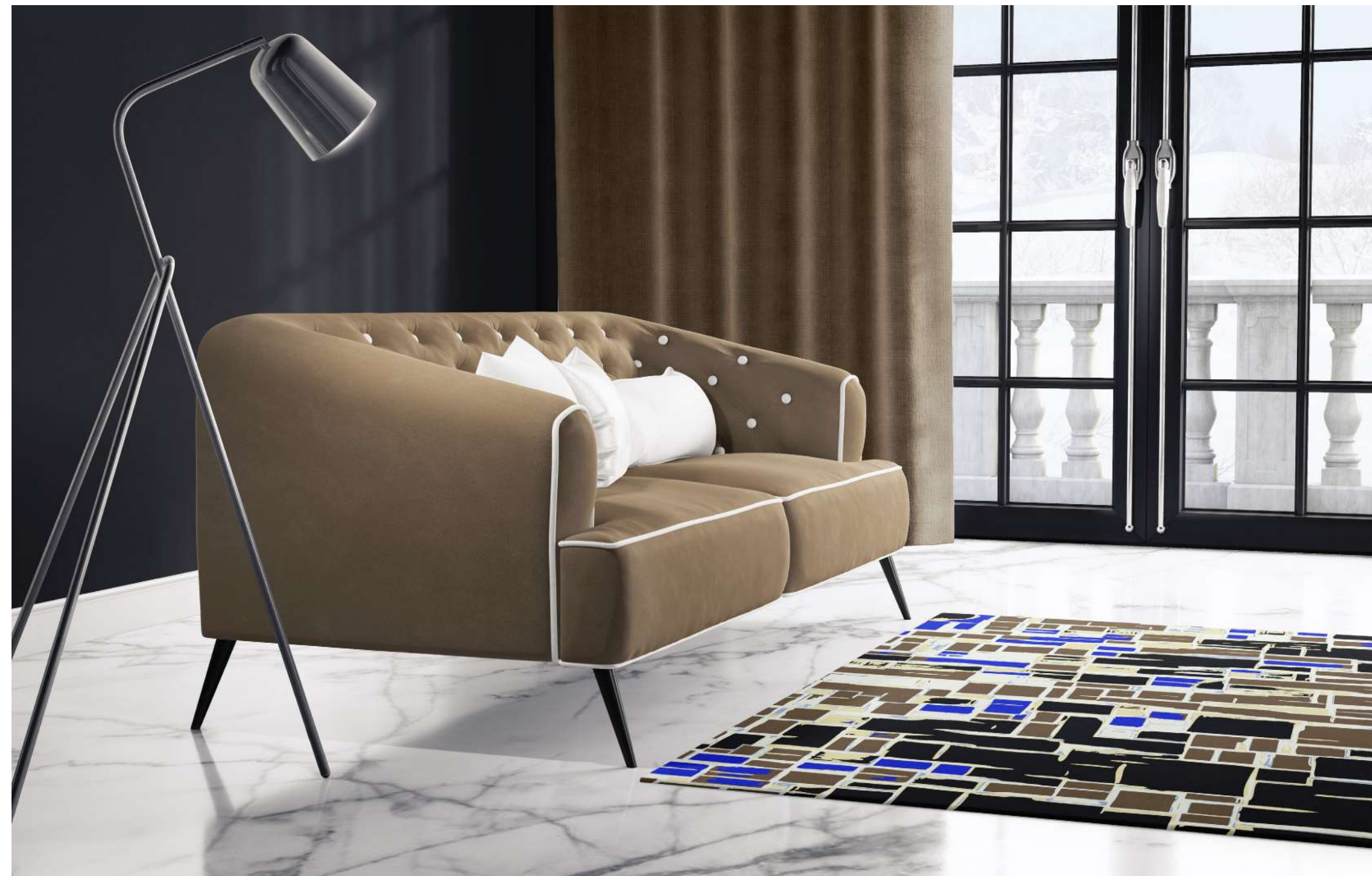
Technique: Hand-knotted or hand-tufted rug

Production and shipping time: Approx. 3-6 weeks, depending on your rug size

Delivery after shipping: 3-5 days

Handmade in India, custom made to order

NB! The rug design (and its size) can have adjusted colourways, according to a custom order. Other sizes available upon request.





Mondrian in Grey-Teal Rug

Material: New Zealand merino wool and viscose mix

Size: W: 140 cm x H: 200 cm; W: 200 cm x H: 300 cm

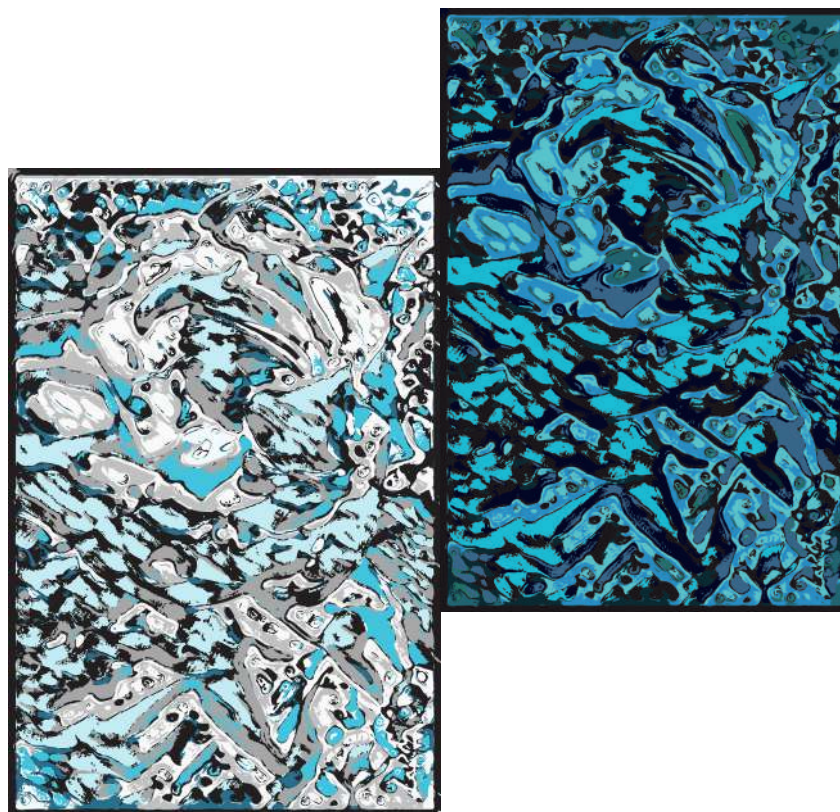
Technique: Hand-knotted or hand-tufted rug

Production and shipping time: Approx. 3-6 weeks, depending on your rug size

Delivery after shipping: 3-5 days

Handmade in India, custom made to order

NB! The rug design (and its size) can have adjusted colourways, according to a custom order. Other sizes available upon request.



Ocean Splash

This exclusive hand-knotted wool rug resembles a splash of ocean waves. Can be treated as an art canvas on your floor: the ocean stirs up your heart, inspires the imagination and brings joy to the soul! Available in black-turquoise and white-turquoise colourways.



Ocean Splash in White-Turquoise Rug

Material: New Zealand merino wool and viscose mix

Size: W: 140 cm x H: 200 cm; W: 200 cm x H: 300 cm

Technique: Hand-knotted or hand-tufted rug

Production and shipping time: Approx. 3-6 weeks, depending on your rug size

Delivery after shipping: 3-5 days

Handmade in India, custom made to order

NB! The rug design (and its size) can have adjusted colourways, according to a custom order. Other sizes available upon request.





Ocean Splash in Black-Turquoise Rug

Material: New Zealand merino wool and viscose mix

Size: W: 140 cm x H: 200 cm; W: 200 cm x H: 300 cm

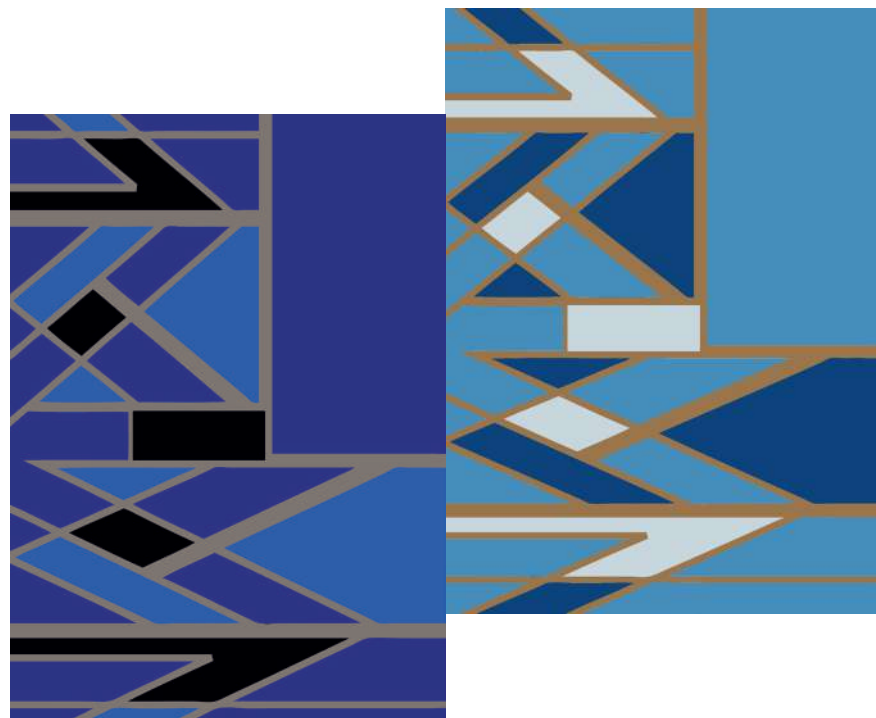
Technique: Hand-knotted or hand-tufted rug

Production and shipping time: Approx. 3-6 weeks, depending on your rug size

Delivery after shipping: 3-5 days

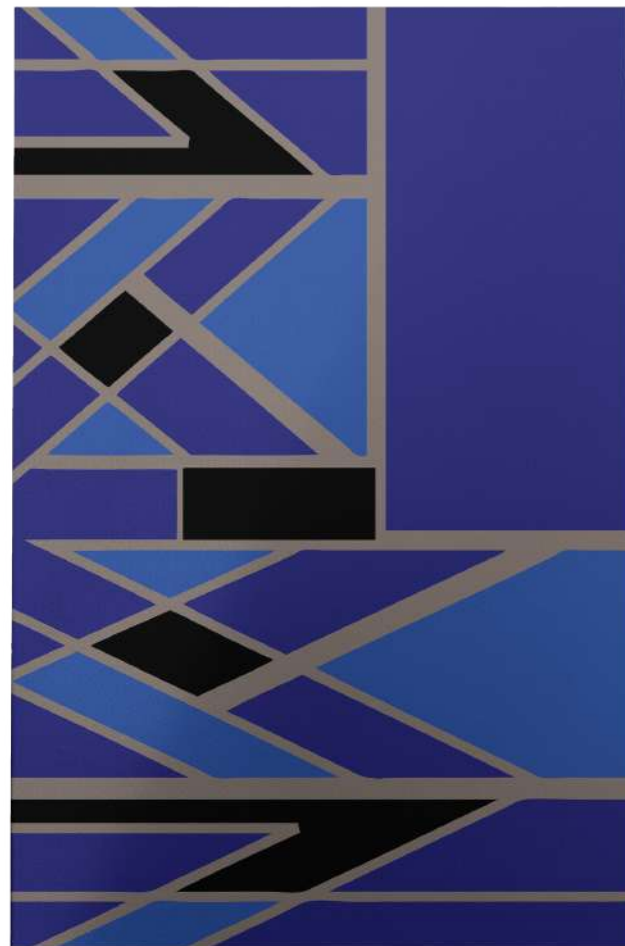
Handmade in India, custom made to order

NB! The rug design (and its size) can have adjusted colourways, according to a custom order. Other sizes available upon request.



Tiled Arrow

This exclusive hand-tufted wool rug is inspired by contemporary geometric patterns. Its cobalt or turquoise colour scheme appeals to a variety of styles and sensibilities, while the striking gold adds a regal look and feel to any room.



Tiled Arrow in Cobalt-Gold Rug

Material: New Zealand merino wool and viscose mix

Size: W: 140 cm x H: 200 cm; W: 200 cm x H: 300 cm

Technique: Hand-tufted rug

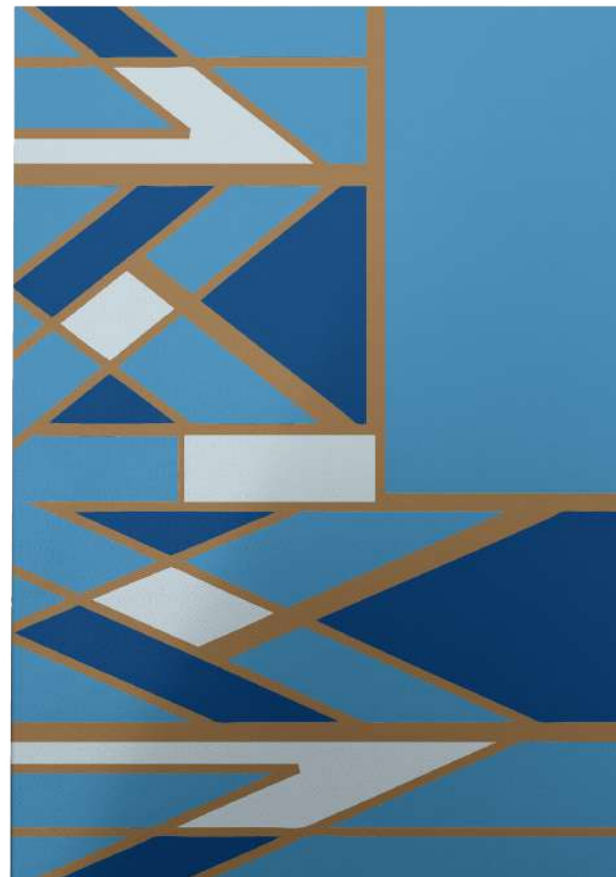
Production and shipping time: Approx. 3 weeks, depending on your rug size

Delivery after shipping: 3-5 days

Handmade in India, custom made to order

NB! The rug design (and its size) can have adjusted colourways, according to a custom order. Other sizes available upon request.





Tiled Arrow in Turquoise Rug

Material: New Zealand merino wool and viscose mix

Size: W: 140 cm x H: 200 cm; W: 200 cm x H: 300 cm

Technique: Hand-tufted rug

Production and shipping time: Approx. 3 weeks, depending on your rug size

Delivery after shipping: 3-5 days

Handmade in India, custom made to order

NB! The rug design (and its size) can have adjusted colourways, according to a custom order. Other sizes available upon request.



Pomegranate

Our POMEGRANATE collection features a matching wallpaper, designer pillows with 100% handmade crewel embroidery and exclusive hand-tufted wool rugs.

In many ancient cultures pomegranate symbolizes fertility, abundance and a happy marriage.



Pomegranate Striped Abundance Rug

Material: New Zealand merino wool and viscose mix

Size: W: 140 cm x H: 200 cm; W: 200 cm x H: 300 cm

Technique: Hand-knotted or hand-tufted rug

Production and shipping time: Approx. 3-6 weeks, depending on your rug size

Delivery after shipping: 3-5 days

Handmade in India, custom made to order

NB! The rug design (and its size) can have adjusted colourways, according to a custom order. Other sizes available upon request.





Pomegranate Branch Rug

Material: New Zealand merino wool and viscose mix

Size: W: 140 cm x H: 200 cm; W: 200 cm x H: 300 cm

Technique: Hand-knotted or hand-tufted rug

Production and shipping time: Approx. 3-6 weeks, depending on your rug size

Delivery after shipping: 3-5 days

Handmade in India, custom made to order

NB! The rug design (and its size) can have adjusted colourways, according to a custom order. Other sizes available upon request.





Pomegranate Layered Rug

Material: New Zealand merino wool and viscose mix

Size: W: 140 cm x H: 200 cm; W: 200 cm x H: 300 cm

Technique: Hand-knotted or hand-tufted rug

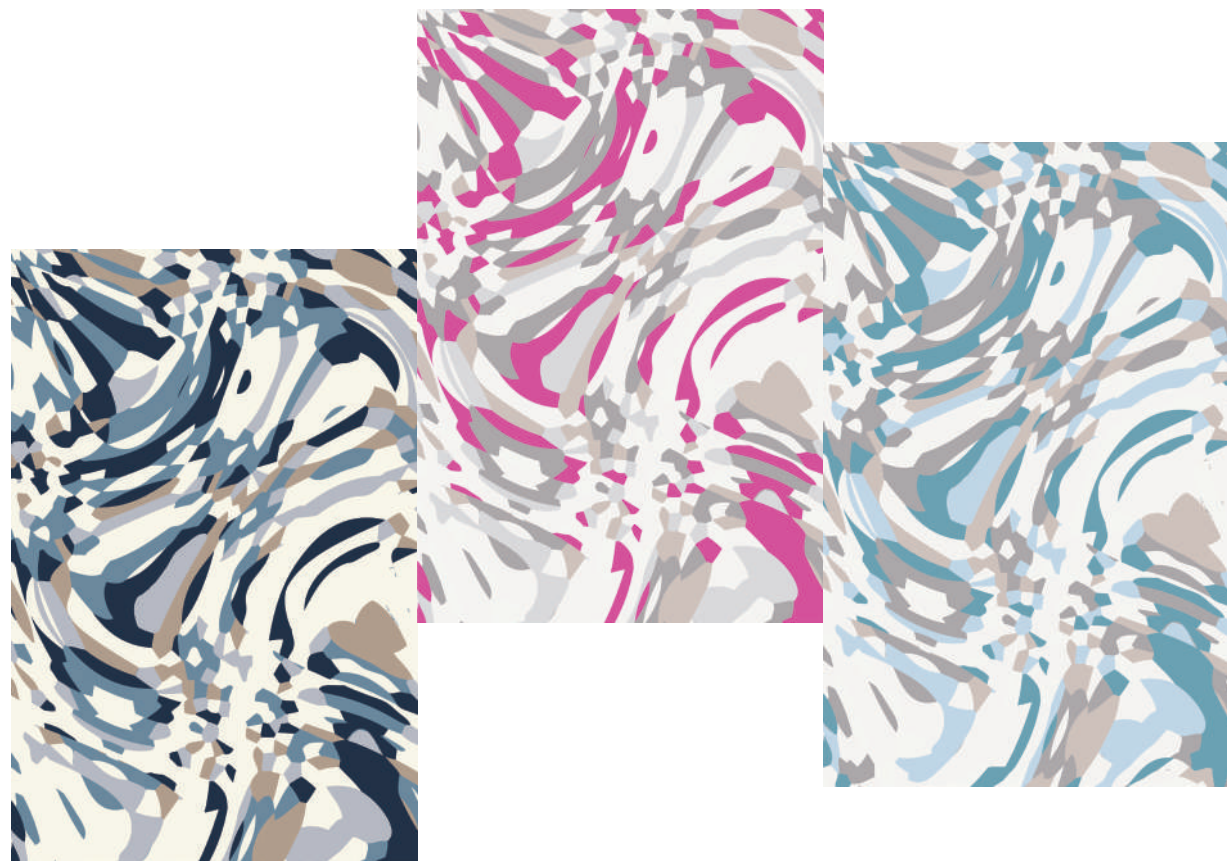
Production and shipping time: Approx. 3-6 weeks, depending on your rug size

Delivery after shipping: 3-5 days

Handmade in India, custom made to order

NB! The rug design (and its size) can have adjusted colourways, according to a custom order. Other sizes available upon request.





Knitted Mosaic

This trendy and dynamic KNITTED MOSAIC rug lets your eye wander in search of colour and excitement. It's a stunning statement for your living or bedroom, adding plenty of colour and texture. Available in fuchsia, dark blue and turquoise colourways.



Knitted Mosaic in Dark Blue Rug

Material: New Zealand merino wool and viscose mix

Size: W: 140 cm x H: 200 cm; W: 200 cm x H: 300 cm

Technique: Hand-knotted or hand-tufted rug

Production and shipping time: Approx. 3-6 weeks, depending on your rug size

Delivery after shipping: 3-5 days

Handmade in India, custom made to order

NB! The rug design (and its size) can have adjusted colourways, according to a custom order. Other sizes available upon request.





Knitted Mosaic in Fuchsia Rug

Material: New Zealand merino wool and viscose mix

Size: W: 140 cm x H: 200 cm; W: 200 cm x H: 300 cm

Technique: Hand-knotted or hand-tufted rug

Production and shipping time: Approx. 3-6 weeks, depending on your rug size

Delivery after shipping: 3-5 days

Handmade in India, custom made to order

NB! The rug design (and its size) can have adjusted colourways, according to a custom order. Other sizes available upon request.



Knitted Mosaic in Turquoise Rug

Material: New Zealand merino wool and viscose mix

Size: W: 140 cm x H: 200 cm; W: 200 cm x H: 300 cm

Technique: Hand-knotted or hand-tufted rug

Production and shipping time: Approx. 3-6 weeks, depending on your rug size

Delivery after shipping: 3-5 days

Handmade in India, custom made to order

NB! The rug design (and its size) can have adjusted colourways, according to a custom order. Other sizes available upon request.





Geisha

Striking graphic pattern of this GEISHA rug will bring a smile on your face! This rug is designed to evoke feminine power, intrigue and playfulness into a teenage girl's room. Geishas are the symbol of sophistication and are unquestionably custodians of Japanese culture and traditions. If you would like to add some Japanese influence and spice to your interior, this is the rug for you.



Geisha Rug

Material: New Zealand merino wool and viscose mix

Size: W: 140 cm x H: 200 cm; W: 200 cm x H: 300 cm

Technique: Hand-tufted rug

Production and shipping time: Approx. 3 weeks, depending on your rug size

Delivery after shipping: 3-5 days

Handmade in India, custom made to order

NB! The rug design (and its size) can have adjusted colourways, according to a custom order. Other sizes available upon request.





Heart

HEART rug is a one colour contemporary carpet with a structured heart-shaped cut pile pattern. It has simple, yet a sophisticated design. Pink or grey colour together with high-pile heart texture make it an adorable addition to any girl's room interior.



Heart Rug in Grey

Material: New Zealand merino wool and viscose mix

Size: W: 140 cm x H: 200 cm; W: 200 cm x H: 300 cm

Technique: Hand-tufted rug

Production and shipping time: Approx. 3 weeks, depending on your rug size

Delivery after shipping: 3-5 days

Handmade in India, custom made to order

NB! The rug design (and its size) can have adjusted colourways, according to a custom order. Other sizes available upon request.





Heart Rug in Pink

Material: New Zealand merino wool and viscose mix

Size: W: 140 cm x H: 200 cm; W: 200 cm x H: 300 cm

Technique: Hand-tufted rug

Production and shipping time: Approx. 3 weeks, depending on your rug size

Delivery after shipping: 3-5 days

Handmade in India, custom made to order

NB! The rug design (and its size) can have adjusted colourways, according to a custom order. Other sizes available upon request.



MIURIO design studio

MIURIO interior surface design studio's mission is to encourage people to use more color and expression in their everyday life. Be it home interior or public space or your wearable silk accessory!

The studio was established in 2012, based on a vision to create colorful and expressive interior product collections. Our studio designs and produces luxury handmade rugs, limited collections of hand-embroidered cushions and eco-wallpaper, as well as exquisite and empowering wearable silk accessories for women and men.

We work professionally both with textile & rug companies; interior architects and designers, offering custom-made designs and finished products (e.g. cushions, rugs or wallpaper) for B2B clients in public spaces, hotels and restaurants, as well as for retail clients.

„We provide “colour therapy” and create positive emotions through evoking, lively and colourful designs.” – shares the studio's head designer Rita Assor.

Rita's passion for photography and interior design emerged after having her second child. That's when she decided to leave her job in banking and pursue a dream in creative fields. Her inspiration is driven mostly from travelling, art and collaboration with textile artisans. In designs she partially uses her photography with digital post-processing techniques achieving rich and elegant patterns.





We are proudly using ARS 1200 wool color reference tool for rug production

ARS Colors is a manufacturer of Color Referencing System for carpet and home furnishing products, used by textile designers, fashion designers, architects and creative individuals. At present it is the producer of the largest number of colors in the world with a collection of 6551 colors in different types of yarn (3200 shades in wool, 2020 shades in viscose & 1331 shades in cotton) and also has a presence of its users in 65 countries around the globe. ARS color reference tools are certified by ISO 9001 certificate.

In MIURIO studio we use ARS 1200 wool color reference tool which is a complete and comprehensive collection of 1200 shades in wool. This color system contains a perfect combination of both neutral and splashy shades. The box is split into 5 trays with 10 groups. Every group has 10 different tones and every tone has 12 gradations.

NB! Please note that colours in this catalogue are approximate. For correct colours please refer to our ARS 1200 color reference tool or get a rug sample before your rug order.



Care instructions

- Rotate your rug every 6 months to prevent excessive wear and sunlight exposure on the surface of the rug
- Use rug protectors under the legs of heavy furniture to avoid flattening the yarn pile
- Vacuum regularly on a low-power setting to prevent dirt from settling into the fibers and yarns.
- Professional rug cleaning recommended
- Some shedding will occur due to the nature of the wool yarns, but should diminish over time.
- Do not pull loose yarns, instead clip with scissors

MIURIO

PHONE

+372 5816 2073

EMAIL

info@miurio.com

WEB

www.miurio.com

INSTAGRAM

[@miurio_textiles](https://www.instagram.com/miurio_textiles)

FACEBOOK

[facebook.com/miuriodecor](https://www.facebook.com/miuriodecor)

PINTEREST

[pinterest.com/miuriodecor](https://www.pinterest.com/miuriodecor)